

Iwaki Aquatic



**ITS-C Cephalopod** System



# System Features

Designed by **Iwaki Aquatic** and **Marine Biological Laboratory** specifically for optimizing cephalopod husbandry and flexibility within an aquaria rack system.

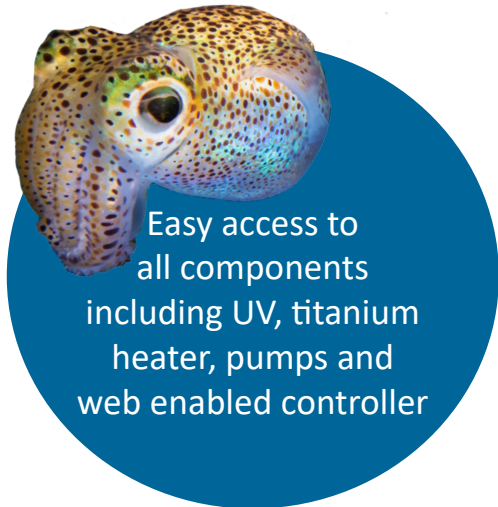
- Structural fiberglass (FRP) rack with leveling feet options
- System designed to exclude metals when possible for optimal longevity in a salt water environment
- Designed specifically for cephalopods, but ideal for any other small/medium salt water research organism that 2, 4.5, 9, and 16L tanks would be suitable for
- Available in stand-alone, flow-through and multi-rack configurations
- Dual, speed-controlled Iwaki Aquatic magnetic drive pumps for minimal noise, vibration, and constant flow technology. The pumps speed up to maintain flow as the filters accumulate debris
- Open shelving provides easy access to tanks, water, feed and drain manifolds
- Titanium chiller and heater options

The only commercially available **FRP** rack system that will not deteriorate over time with seawater

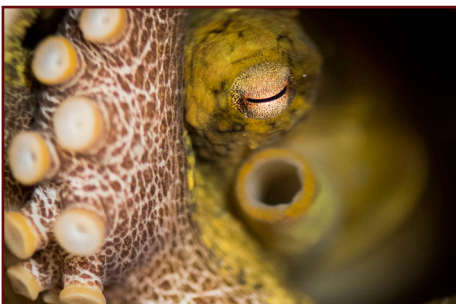


# Filtration System

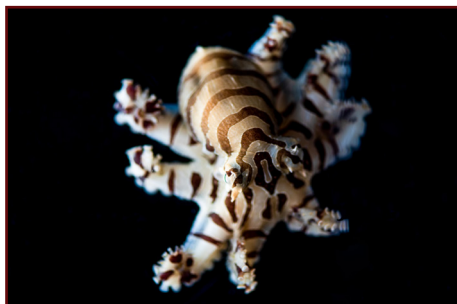
- 2ft<sup>3</sup> oversized moving bed biofilter
- HDPE UV unit
- Protein skimmer in sump
- Large capacity 50-micron cartridge filter
- Activated carbon filter
- 200 micron reusable filter bags
- Denitrification filter



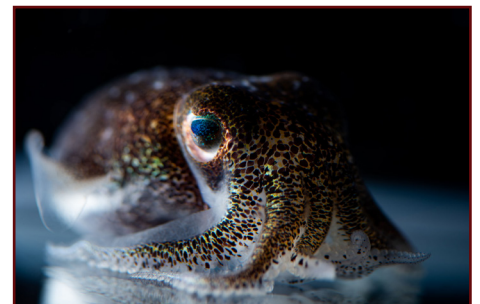
Two-Spot Octopus



Pygmy Zebra Octopus



Hummingbird Bobtail Squid



Credit: Tim Briggs

Credit: Tim Briggs

# Innovative Tank Design

- Two tank styles on one rack system
- 2L, 4.5L and 9L with baffle design and locking lids
- 16L with standpipe drain and overflow side wall drain
- Aeration options for tanks
- Micron sized external standpipes or tank screens available in 400, 600, 700 and 1000 microns.



2 Liter



4.5 Liter



9 Liter



16 Liter

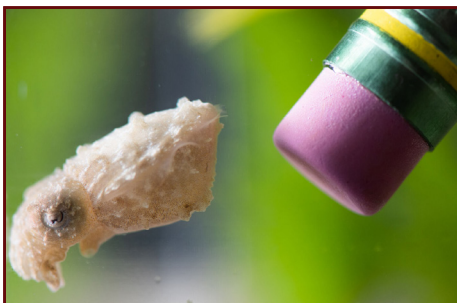
*16L can be used on the bottom 2 racks levels*

# Iwaki Aquatic Life Support Controller



- Monitor and control your system remotely with any internet ready device and our powerful cloud based software platform
- Sends email or SMS text alerts when parameters are out of range
- Chart/graph water quality parameters over time. Up to 90 days with 15 minute sampling intervals
- Standard with pH, temperature, conductivity sensors and dosing control
- System includes level and flow sensors for safety and shut-down of electrical components in the event of a low water or low flow situation.

Dwarf Cuttlefish Hatchling



Striped Pyjama Squid



Flamboyant Cuttlefish



# Specifications



ITS-C Five Shelf System				
Tank Options	2 liter	4.5 liter	9 liter	16 liter
Tank Quantity	16	16	4	5
Total System Volume (Liters)	360			
Total Tank Volume (Liters)	220			
Turnover Rate per Hour	5			
UV Dose Rate	+100 mJ/cm2 at 12 month end of lamp life			
Mechanical Filter, 50 Micron	1.3 M2 surface area			
Activated Carbon Filter	2.5" x 10" filter			
Denitrification Filter	2.5" x 10" filter			
	Width	Depth	Height	
System Dimensions, Centimeters	193	61	241	
System Dimensions, Inches	76	24	95	
Operating Weight with 4.5L or 9L Tanks	690 kg, 1521 lbs			
Voltage/Hertz/Amps with Heater	120/60/12	or	230/50-60/6	

## About Iwaki Aquatic

Iwaki Aquatic was established as a division of Iwaki America in 2016 to support the aquatic research community. Iwaki Aquatic’s mission is to build quality aquatic research systems that are extremely reliable and easy to both use and maintain. Our 60+ years of experience in designing and building controllers and pumps for global water treatment applications, position us as the leader in both technology and value. Our aquatic team includes aquaculture specialists, biologists, engineers and customer service experts with many years of experience supporting aquatic research systems. We have worked closely with the **Marine Biological Laboratory Cephalopod Program** to create this ideal system for cephalopods. Please contact us to learn more about the system, features, and how we can help with your project.



ISO 9001 registered company  
IALT-00566 April 2024